

China Brand X-ray Inspection Solution Supplier



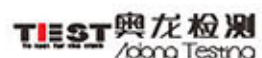
—— X-ray Inspection System, X-ray Diffractometer



—— Crystal Orientation Instrument



—— Linear Detector, Flat Panel Detector, Sensor



—— NDT Inspection Service



—— Rockwell, Brinell, Vickers Hardness Tester



Dandong Aolong Radiative Instrument Group Co., Ltd.

Add: No.46 Fumin Street, Lingang Industrial Zone, Dandong City, CN

Tel: + 86 415 3458128, 3141333

Fax: +86 415 3458588, 3458688

Website: www.aolongcn.cn

Email: al@aolongcn.cn



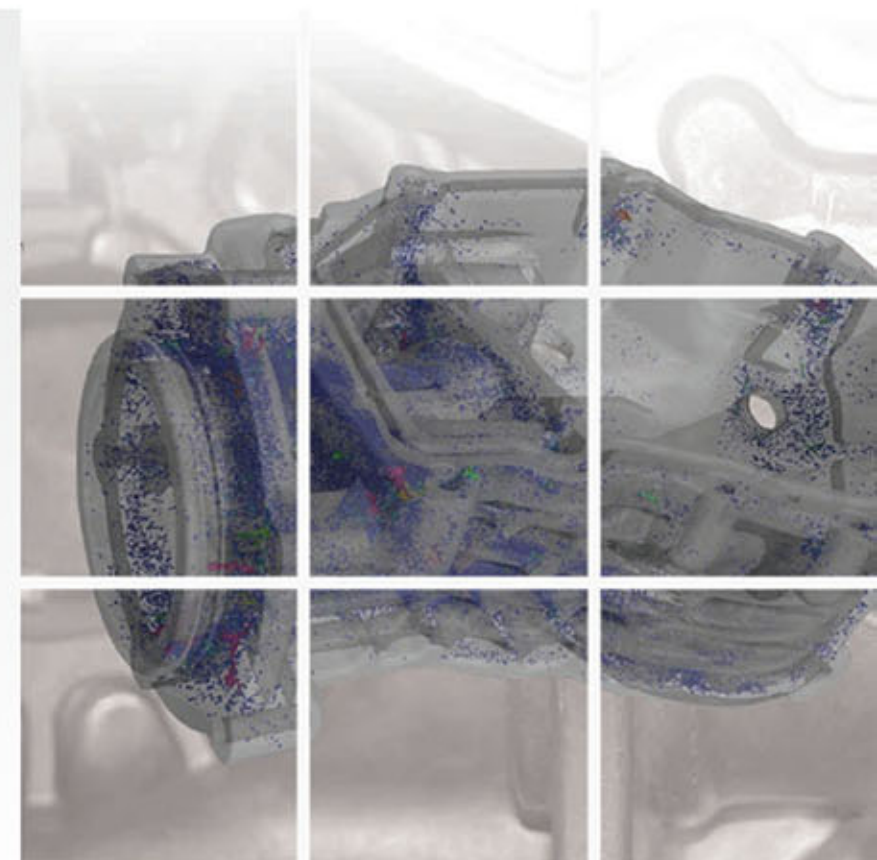
Since 1964

CONVINCING INSPECTION SOLUTION SUPPLIER

CHINA RADIOGRAPHIC EQUIPMENT R&D CENTER

GLOBAL NON-DESTRUCTIVE TESTING SERVICE PIONEER

X-Ray



丹东奥龙射线仪器集团有限公司
Dandong Aolong Radiative Instrument Group Co., Ltd.

www.aolonggroup.cn

Registration Number: 9121060074434309X4

Standard Portable X-ray Flaw Detector

Patent number : ZL200420070559.3
 ZL200920247676.5
 ZL200920247677.X
 ZL20042010606.0



The faith of design is firmly, reliable and durable. The controller adopts the integration technology to make the inner configuration more reasonable with imported parts, and more residual electric parameter. The design exposal under the 20kV prolongs the life of the X-ray tube and coil and improves the reliability of product at the same time.

The generator with strong adjust-ability. It adapts the control circuit and control technology to control the power source, so it can work at anyone methods of supply. The product technology has gotten two national patents.

Application fields: spaceflight industry, shipbuilding industry, metallurgy industry, chemical industry, power supply, automobiles, pressure container, heavy machine manufacture industry, bridge building industry and others.

Panoramic Portable X-ray Flaw Detector (with Ceramic X-ray Tube)

Model	Input (kW)	Focus (mm)	Beam Angle		A ₃ Steel Max. Penetration (mm)		Dimension Of Generator(mm)
			Cone Target	Flat Target	Cone Target	Flat Target	
XXGH-2005	2.0	1.0 × 5.0	30 × 360°	25° × 360°	24	27	290 × 290 × 615
XXGH-2505	2.5	1.0 × 5.0	30 × 360°	25° × 360°	34	37	325 × 325 × 705
XXGH-3005	3.0	1.0 × 5.5	30 × 360	25° × 360	44	47	345 × 345 × 715

Portable X-ray Detector (with ceramic X-ray tube)

Model	Output Voltage (kV)	Input	Focus Size (mm)	Beam Angle	A ₃ Steel Max. Penetration (mm)	Weight of Generator (kg)	Dimension Of Generator(mm)
XXG-1605	80~160	1.5	0.8 × 0.8	40+5°	19	14.5	225 × 225 × 550
XXG-2005	100~200	2.0	2.0 × 2.0	40+5°	30	18	285 × 285 × 615
XXG-2505	150~250	2.5	2.0 × 2.0	40+5°	40	30.5	320 × 320 × 640
XXG-3005	170~300	3.0	2.5 × 2.5	40+5°	50	36.5	345 × 345 × 670
XXG-3505	180~350	3.5	2.5 × 2.5	40+5°	60	38	345 × 345 × 670

Directional Portable X-ray Detector (with glass X-ray tube)

Model	Output Voltage (kV)	Input	Focus Size (mm)	Beam Angle	A ₃ Steel Max. Penetration (mm)	Weight of Generator (kg)	Dimension Of Generator(mm)
XXQ-1005	60~100	1.2	0.8 × 0.8	40°	8	11.1	190 × 190 × 530
XXQ-1605	80~160	1.5	0.8 × 0.8	40°	19	15.2	225 × 225 × 585
XXQ-2050	100~200	2.0	1.5 × 1.5	40+5°	30	23	285 × 285 × 665
XXQ-2505	150~250	2.5	2.0 × 2.0	40+5°	40	35	320 × 320 × 730
XXQ3005	170~300	3.0	2.3 × 2.3	40+5°	50	45.5	345 × 345 × 830
XXQ-3205	180~320	3.2	2.5 × 2.3	40+5°	55	45.5	345 × 345 × 830
XXQ-3505	180~350	3.4	2.8 × 3.0	40+5°	60	47	345 × 345 × 800

Panoramic Portable X-ray Detector (with glass X-ray tube)

Model	Output Voltage (kV)	Input	Focus Size (mm)	Beam Angle		A ₃ Steel Max. Penetration (mm)		Weight of Generator (kg)	Dimension Of Generator (mm)
				Cone Target	Flat Target	Cone Target	Flat Target		
XXH-1005	60~100	1.2	1.0 × 3.5	30° +5°	25+5°	4	6	11.1	190 × 190 × 530
XXH-1605	80~160	1.5	1.0 × 3.5	30° +5°	25+5°	12	15	15	225 × 225 × 585
XXH-2005	100~200	2.0	1.0 × 3.5	30° +5°	25+5°	24	27	21.5	285 × 285 × 665
XXH-2505	150~250	2.5	1.0 × 2.4	30° +5°	25+5°	34	37	33.5	320 × 320 × 730
XXH-3005	170~300	3.0	1.0 × 2.3	30° +5°	25+5°	44	47	40	345 × 345 × 830
XXH-3205	180~320	3.2	1.0 × 5.0	30° +5°	25+5°	45	50	40	345 × 345 × 830
XXH-3505	180~350	3.4	1.0 × 5.0	30° +5°	25+5°	52	55	42.6	345 × 345 × 830

X-ray Pipeline Crawler

Patent number 200810011651.5



This product adopts our company's independent designed constant tube current control system, completely solves the problems of battery power reducing and film bad resolution of traditional pipeline crawler. The product's control center adopts Siemens S7-200 type programmable PLC, its positioning system adopts advanced magnetism positioning method which makes the product have many advantages, such as high integration, big memory, high coefficient of safety, high security, high sensibility and reliability.

Main Function

- Inspect the power of the battery automatically, when battery voltage is low, it will return in time
- Constant current control makes sure the film's coherence
- High precision of tube voltage adjustment makes sure the film's coherence
- There are all kinds of real time protection functions, such as meeting water, over-voltage, zero voltage, over current, zero voltage, inspection for battery voltage, barrier, antenna falling off, X-ray generator falling off, over heat of the X-ray generator, receive failure, motor over power, parameters setting failure, demo setting failure
- Optimum program design takes the crawler working condition fully into account, avoid damage to internal part

AL-100A X-ray Crawler

AL-100B X-ray Crawler

Item	Parameters	Parameters
Range of Pipe Diameter	Φ700mm-Φ1400mm	Φ380mm-Φ1016mm
Max. Penetration (A3 Steel)	42mm	30mm
Tube(Cone)	Max. Output Voltage	300Kv
	Max. Output Current	3mA
	Focal Size	1.0 × 2.5mm
	Beam	360° × 30°
Environment Temperature	-40° ~ 70°	-40° ~ 70°
Relative Humidity	≤90%	≤90%
Energy Capacity of Battery	110V, 22Ah	110V, 22Ah
Motor Power	250W Continuous	250W Continuous
Delay before Exposure	24s	24s
Exposure Time (can be timed outside pipe)	1~300s (Continuously Adjustable)	1~300s (Continuously Adjustable)
Crawling Ability	Two-wheel drive: ≤27°	Two-wheel drive: ≤27°
	Four-wheel drive (Manual): ≤40°	Four-wheel drive (Manual): ≤40°
Location Accuracy	±5mm	±5mm
Crawling Distance	5Km	5Km
Crawling Speed	15m/min~18m/min	15m/min~18m/min
Turning Radius	≥7D	≥7D
Total Weight	154.3Kg	125.3Kg

AL-100C X-ray Crawler

Item	Parameters	
Range of Pipe Diameter	Φ273mm-Φ710mm	
Max. Penetration (A3 Steel)	24mm	
Max. Output Voltage of Tube	200Kv	
Max. Output Current of Tube	3mA	
Tube(Cone)	Focal Size	1.0 × 2.0mm
	Beam	360° × 38°
Environment Temperature	-40° ~ 70°	
Relative Humidity	≤90%	
Energy Capacity of Battery	110V, 10Ah	
Motor Power	150W Continuous	
Delay before Exposure	24s	
Exposure Time (can be timed outside pipe)	1~300s (Continuously Adjustable)	
Crawling Ability	≤27°	
Location Accuracy	±5mm	
Crawling Distance	5Km	
Crawling Speed	15m/min~18m/min	
Turning Radius	≥7D	
Total Weight	75.3Kg	

AL-100D X-ray Crawler

AL-100E X-ray Crawler

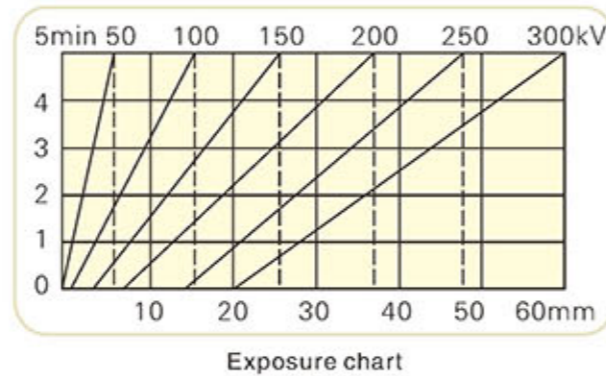
Item	Parameters	Parameters
Range of Pipe Diameter	Φ219mm-Φ510mm	Φ159mm-Φ310mm
Max. Penetration (A3 Steel)	16mm	12mm
Tube(Cone)	Max. Output Voltage	160Kv
	Max. Output Current	3mA
	Focal Size	1.0 × 2.0mm
	Beam	360° × 38°
Environment Temperature	-40° ~ 70°	-40° ~ 70°
Relative Humidity	≤90%	≤90%
Energy Capacity of Battery	110V, 10Ah	96V, 7Ah
Motor Power	150W Continuous	100W Continuous
Delay before Exposure	24s	24s
Exposure Time (can be timed outside pipe)	1~300s (Continuously Adjustable)	1~300s (Continuously Adjustable)
Crawling Ability	≤27°	≤27°
Location Accuracy	±5mm	±5mm
Crawling Distance	5Km	5Km
Crawling Speed	15m/min~18m/min	12m/min~14m/min
Turning Radius	≥7D	≥10D
Total Weight	54.1Kg	About 40Kg

Medium Frequency Portable X-ray Generator

CE ISO 9001 AAA



The product adopts the new structure, new materials and intermediate frequency technology, the high voltage transformer operating frequency up to intermediate frequency, maximum limit reduces the volume and weight of the X-ray generator, the maximum transmission capability of a product compared with the traditional frequency portable X-ray machine is improved by more than 20%, the tube voltage 50kV~250kV continuously adjustable, expanded the scope of testing, can detect 1mm~48mm steel plate, one machine is equal to more machine. The product adopts the latest heat dissipation technology, generator heat quantity is low. The machine can work by mobile power supply (generator), wide adaptation range, improves the utilization rate of the product. The technology of this product has gotten the national patent.



AL-DR-270 Portable X-ray DR System



This products adopts our company's independent designed constant tube current control system, completely solves the problems of battery power reducing and film bad resolution of traditional pipeline crawler. The product's control center adopts Siemens S7-200 type programmable PLC, its positioning system adopts advanced magnetism positioning method which makes the product have many advantages, such as high integration, big memory, high coefficient of safety, high security, high sensibility and reliability.

Equipment Characteristic

- Small outsize, and with high penetrating ability
- Using min input voltage but generate high voltage
- X ray machine and flat panel detector total weight is around 8kg
- Low cost, reduce working time and labor
- Maintenance cost is lower than radioactive source
- Friendly operation interface, with pulse setting
- It is easy to be fixed on tripod and other fixing tools
- X-ray leakage is very limit, safe operation distance is 3 meters from the back of X-ray machine.
- The system doesn't contain bad and dangerous object, don't need worry about the transportation.

Parameters

- X ray voltage: 150kV, 270kV, or 350kV(optional)
- Output dose: Max 4.0mR/pulse, min 2.6mR/pulse
- X ray size: 1/8inch (3mm)
- X ray pulse width: 25n second
- MAX duty circle: 200 pulse/4mins (3000pulse/h)
- Warming up: no
- Flat panel detector size: 35cm x 43cm
- Pixel pitch :140μm

Inspection Samples



Power insert



Power strain clamp



Liquid level detection

Model	Tube Voltage (kV)	Tube Current (mA)	Focus Size (mm)	Beam Angle	Working Method	A ₃ Steel Max. Penetration (mm)	Model of Generator	Model of Controller	Weight of Generator (kg)	Weight of Controller (kg)
XXG-3005ZH	100~300	5	2.5 × 2.5	40+5°	1:1	56	AL-PG-300G	AL-PK-5777	28	11.7
XXG-2505ZH	50~250	5	2.5 × 2.5	40+5°	1:1	48	AL-PG-250G	AL-PK-5777	21.5	11.5

Digital X-ray system for Castings Inspection

Patent number : ZL200710010516.4

Highly dynamic radiography (HDR) System from Aolong Group has revolutionized inspection via X-ray s. Details in thin and thick regions of the inspection item become visible while the item is in motion and without constant adjustment of the X-ray parameters. The solutions from Aolong Group find these flaws reliably.

- Voids
- Gas Pores
- Porosity
- Microporosity
- Areas of localized porosity
- Cracks

System Composition

- X-ray source
- Digital flat panel detector (or image intensifier, or linear detector)
- Image processing system
- Five axes (or 7 axes) manipulator
- Lead cabinet

Main Parameters

- Tube voltage: 20 kV ~450kV
- Tube current: 0.1 mA ~20mA
- Repeatability precision: $\pm 0.01\%$
- High voltage rising time: 0.1 ms ~0.3ms
- Sensitivity: 1.2%~1.5%
- System resolution: 40Lp/cm~60Lp/cm
16 Lp/cm ~39Lp/cm

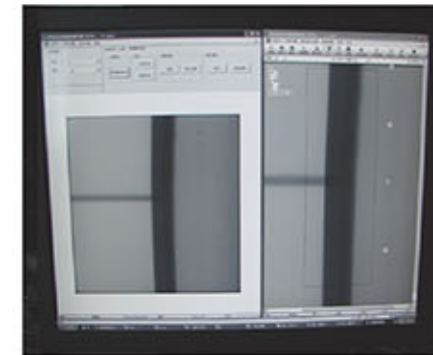
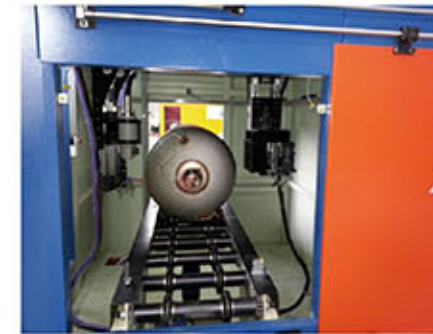
Regulatory Standard

- Conformity CE
- DPR 257/2001 Decree on applications with Ionized Radiation of European
- ASTM E2597-14 Standard Practice
- Chinese JB/T7412-1994 ,GBZ117-2015 and others standard rules .



Digital X-ray System for Cylinder (LNG) Inspection

Patent number : ZL201020170859.4
 201220699544.8
 201320826340.0



XYG-22508/3 and XYG-3205/2 Model Digital X-ray system is designed professionally to the LNG gas cylinder manufactures one passed the identification from National Gas Standardization Technical Committee and National Inspection Administration Department.

It adopts the most advanced high power X-ray tube and high frequency technologies generators to make the whole system get the stronger penetration with more clear testing images on computer.

The software system is the professional developed for LNG vehicle cylinder inspection which promise the whole X-ray system testing the every welding of cylinder with non-stop.

According to the character of LNG vehicle cylinder material (stainless steel), during the process of transportation and inspection, the system adopts the polyurethane material transmission roller which avoids the carbon pollution to the stainless steel material.

This system have already supplied the NDT service for more than 50 LNG vehicle cylinder manufacture companies in the world.

System Composition

- High Frequency constant voltage X-ray source
- High Resolution flat panel detector
- Intelligent Digital imaging process system
- Pipeline Joint design system
- Lead protection system cabinet

High Resolution X-ray System for Small Parts Inspection

Specification of Object Tested

- Max. Size: $\Phi 500\text{mm} \times 500\text{mm}$
- Max. Weight: 30kg
- Max. wall thickness: 80mm (Voidless Al material)
- Ingredient: Al-Si alloy or other

Specification of X-ray System

- Max. penetration: 80mm (Aluminum Alloy material)
- Resolution ratio: 36LP/cm
- X-ray voltage: 160kV
- X-ray current: from 0.5–2.0 mA
- Focus size: $0.5 \times 0.5\text{mm}$
- Porosity defect ability: 0.2–0.3mm
- X-ray source: from 50kV–160kV
- Lead cabinet size: $1218 \times 1416 \times 1857\text{ mm}$



Digital Micro-focus X-ray System

Patent number :201220563142.5



This system is a high-tech product which integrates with modern computer software technology, precision mechanical technology, optical technology, electronic technology, sensor technology, NDT technology and image processing technology. It is an efficient method for product researching, invalidation analysis, high reliable filtering, quality evaluation and artifact improvement.

Applications

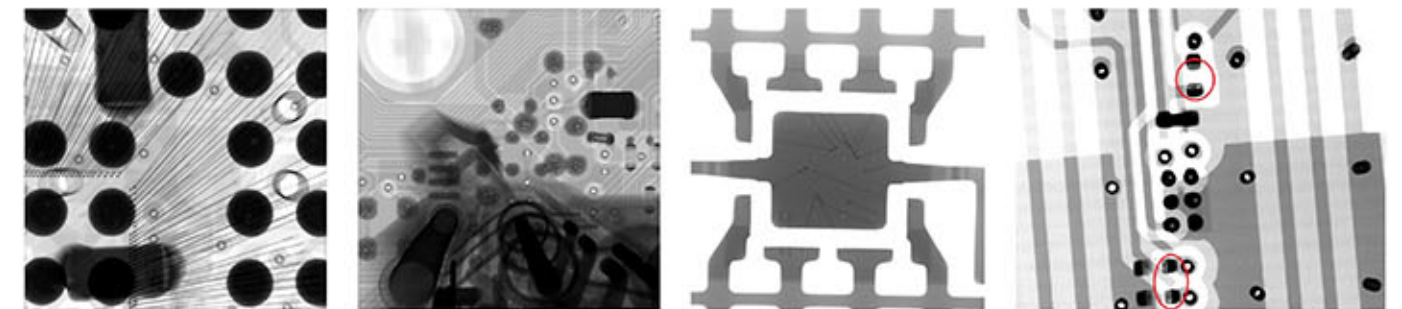
- BGA, CSP and flip chip
- Welds of PCB
- Various battery
- IC encapsulation
- Capacitance and resistance
- Inner defect of the metal material and dielectric material
- Inner structure and module of the light weight material
- Electrothermal pipe, pearl and precision Components

Main Functions of Image Processing System

- Virtual 3D imaging, real-time imaging zoom in and out.
- Gray level optimized, real-time artificial, humanized design
- Electronic shoot, many frames superposition, fast and convenience
- Supporting positive and negative imaging, edge strength
- Precise measurement of the curve and statistics
- BGA welds measurement technology
- Measuring the angles, radius, welding ball area, air pore; pore proportion calculating and welding ball coordinate and statistic
- Dynamic store, print, DVD read and write and other output mode

Main Parameters

- Microfocus X-ray source
- Tube voltage range: 20kV ~ 160kV
- Tube current range: 0.1 μA –1000 μA
- JIMA Resolution: 0.5 μm –2 μm
- Magnification: 20 times ~3000 times
- The inspect platform can move along x, y and z axes



High Power Industrial CT

Patent number : 201420848600.9



It is composed of the high frequency and constant voltage x-ray source, digital flat panel detector, and high precision mechanical inspection table. The system not only displays the CT chip and 3D images of the inspected object, but also with 2D real-time imaging inspection. It has the advantages such as compact, high speed inspection, high resolution images, accurate inspection and high ratio of performance to price. So it is widely used for NDT inspection and measurement in aerospace, aviation, military, machinery, casting, IT, automobile field, etc.

Main Functions

- Using cone beam CT scan and DR inspection mode, based on the measurement of the object, it can get thousands pieces tomographic images at one time .
- The system with the highest possible flexibility for individual customer requirements.
- The system can analyze defect and pore to support ROI scan.
- Mark defect's volume, size and position by the different color.
- Analysis of wall thickness: mark the analysis results in different color.
- Measure the position, distance, radius, angle and other parameters of the object.
- Reverse engineering by CAD design compared with the physical object.
- Segmentation tool: data centralization, segmentation according to material and geometry.
- Achieve accurate measurement of internal dimensions of the object.

Main Parameters

- Tube voltage: 20kV~450kV
- Focus size: 0.4mm
- Density resolution: 0.5%
- Scan mode: cone beam scan
- Detector: digital flat detector or linear detector

Micro-focus Industrial CT



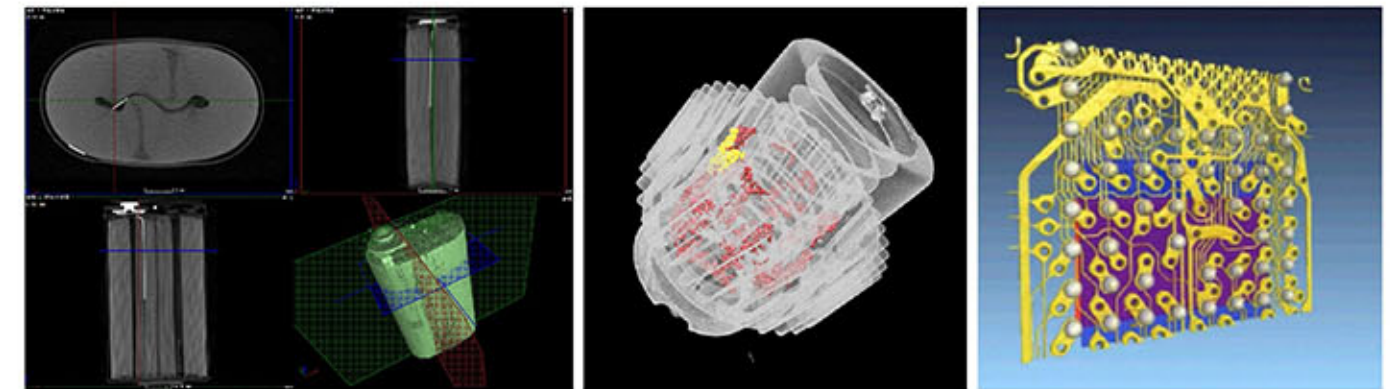
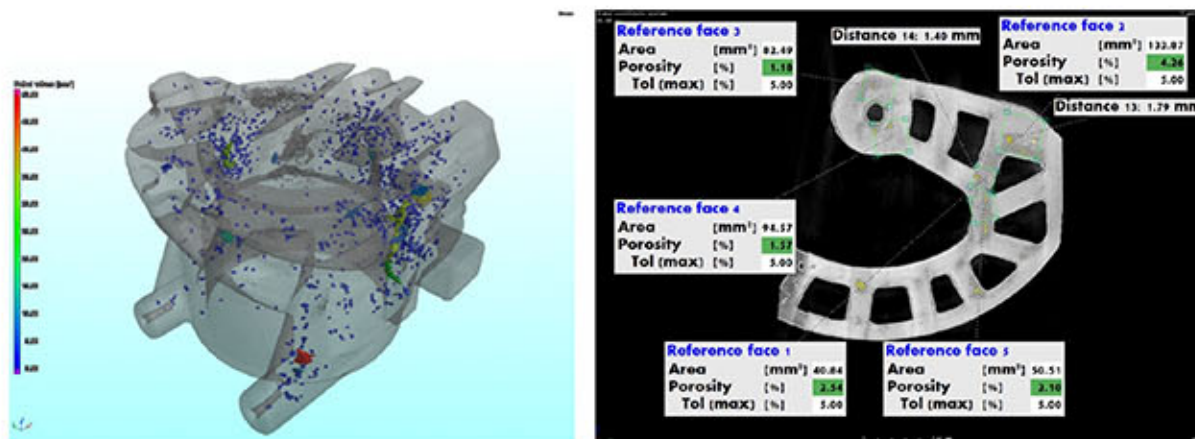
It is a compact designed by the flexible X-ray source and high resolution detector, which can meet with various inspection requirements. The system with characters such as high resolution radiography, high speed scan, multi-functions, easy operation with stable working and low maintenance cost.

This space-saving system can be equipped with different micro-focus X-ray source, from 160kV to 300kV. The best JIMA resolution could achieve 0.5 μ m.

The system is ideal for inspecting metal, ceramics, core, complex casting part and semiconductor. So it is widely used in aerospace, machinery, electric, material, geology, archaeology fields and others.

Main Functions

- Open target micro-focus X-ray tube of long working life and the stable performance.
- 3D volume CT.
- Stable marble base ensure the equipment' s stability.
- High precision bearing technique and linear slideway system ensure the high precision measurement.
- Compact appearance design with the small cabinet required.
- Automatic fast inspecting, analyzing, and displaying internal defect and pore.
- Analyzing each defect' s volume, position, size and surface area.
- Marking different volume defect in different color.
- Analyzing and counting the whole object or ROI area, analyzing defect size, total pore ratio and pore volume.
- Analysis result can be printed and saved.
- Scan mode: cone beam scan or helix scan.



AL-Y3000 Model X-ray Diffraction Instrument

AL Series diffractometer is designed for materials research and industrial products analysis. It is the perfect combination of conventional analysis and special purpose measurement.

- The system is perfect combination of hardware and software, which meets the needs of academics and researchers in different application fields.
- High precision diffraction angle measurement system obtains more accurate results.
- High stability of the X-ray generator control system gets more stable repeat measuring precision.
- Programmable operation, integrated structure design, easy operation, elegant looks.

X-ray diffraction (XRD) is a versatile test instrument to reveal the crystal structure and chemical information:

- One or various phase identification of the unknown sample
- Known phase of mixed samples quantitative phase analysis
- Crystal structure analysis
- Metal material texture and stress analysis



Technique Parameters

	AL-Y3000
Rated power	3000W
Tube voltage	10~60kV
Tube current	5~80mA
X-ray tube	glass tube, ceramic tube, ripple ceramic tube: Cu, Fe, Co, Cr, Mo, etc. Power: 2000W
Focus size	1 x 10mm or 0.4 x 14mm or 2 x 12mm
Stability	≤0.01%
Goniometer Structure	Horizontal ($\theta-2\theta$)
Radius of diffraction	185mm
Scanning range	0~164
Scanning speed	0.0012° ~70° /min
Max. revolving speed	100° /min
scanning mode	$\theta-2\theta$ linkage, θ , 2θ single action; continuous or stepping scanning
Angle repeatable accuracy	1/1000°
Min. stepping angle	1/1000°
Detector	proportional counters(PC) or scintillation counters(SC)
Max. Linear counting rate	5 x 10 ⁵ CPS (with the compensate function of drop out counting)
Energy resolution	≤25%(PC), ≤50%(SC)
Counting mode	differential or integral, automatic PHA, dead time regulate
Measurement stability of system	≤0.01%
Scattered rays dose	≤1 μ Sv/h (surface of the X-ray protective device)
Instrument integrative stability	≤0.5%
Outside size	1100 x 850 x 1750mm

Combined Multi-functional X-ray Diffractometer

AL-2700 series diffractometer is designed for material research and industrial product analysis, and it is a perfect product which combines the conventional analysis and special purpose measurement.

- The perfect combining with hardware and software system, satisfy with the requirement of different application field academician, scientific research.
- High precision diffraction angle measuring system, obtaining more accurate measurement results.
- High stability X-ray generator control system, and get more stable repeatable measurement precision.
- Various functional accessories meet the requirement of different testing purposes.
- Program operation, integrated structure design, easy to operate, more beautiful appearance of the instrument;

X-ray diffractometer is a kind of universal testing instrument for revealing crystal structure and chemical information of material:

- One and many phase identification of unknown sample
- Quantitative analysis of the phase in the mixed sample
- Crystal structure analysis (Rietveld structure analysis)
- The crystal structure change (high temperature and low temperature condition) of the abnormal condition.
- Thin film sample analysis, including film, multilayer film thickness, surface roughness, charge density.
- Analysis of micro area sample.
- Texture and stress analysis of metallic materials.



	AL-2700A	AL-2700B
Rated power	3kW(HF, HV control technology)	4kW
Tube voltage	10~60kV	
Tube current	5~50mA	5~80mA
X-ray tube	Metal ceramic tube	Target material: Cu, Fe, Co, Cr, Mo, etc Power: 2.4kW
Focus size	1 x 10mm or 0.4 x 14mm or 2 x 12mm	
Stability	≤0.005%	≤0.01%
Goniometer structure	Sample level ($\theta-\theta$)	
Radius of diffraction	225mm (or custom by request: 150~285mm range)	
2θ Scanning range	-6~160° (θ_s : -3~80°, θ_d : -3~80°)	
Scanning speed	0.0012° ~50° /min	
Angle locating speed	1500° /min	
Scanning fashion	θ_s/θ_d linkage / single action; continuous, stepping and Ω mg	
Minimal stepping angle	1/10000°	
Angle repeatable accuracy	1/10000°	
2θ Angular linearity	International standard sample (Si, Al ₂ O ₃), the angle of all peak in full spectrum are not more than ±0.02°	
Detector	Proportional counters(PC) or scintillation counter(SC), Silicon drift detector(SDD), High speed one-dimensional semiconductor array detector	
Maximal counting rate of linearity	5 x 10 ⁵ CPS(PC, SC with the compensate function of miss counting), 15 x 10 ⁵ CPS (SDD), 9 x 10 ⁵ CPS(one-dimensional array)	
Energy resolution ratio	≤25%(PC, one-dimensional array), ≤50%(SC), ≤200eV(SDD)	
Counting fashion	Differential or integral, automatic PHA, dead time regulate	
Stability of system measure	≤0.01%	
Scattered rays dose	≤1 μ Sv/h (surface of the X-ray protective device)	
Instrument integrative stability	≤0.1%	≤0.5%
Figure size	1000 x 800 x 1600mm	

In order to satisfy various field customer's need, our company supply the system update, operation training, equipment maintenance, repairing and reforming service, and also supply industrial CT inspection, X-ray digital imaging inspection, UT, MT, PT and sample analysis service.

Industrial CT Inspection

- Defect analysis
- Metrology
- Assembly control
- Designed and physical object comparison
- Material analysis
- Reverse engineer
- Cultural relic 3D image reconstruction
- Extend 3D print

X-ray Digital Imaging Inspection

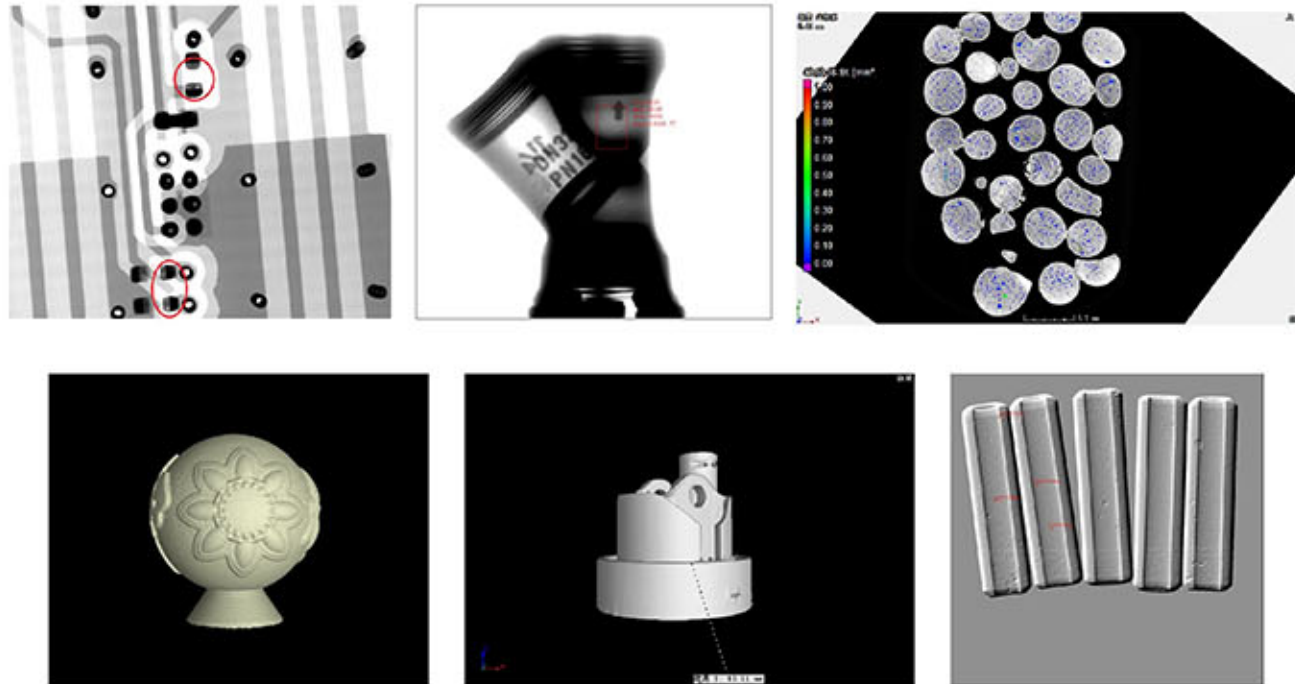
Casting part, non-metal material, multi material inner and outer high resolution radiography

Sample Analysis

- One or several kinds Phase Identification
- Sample structure change and stress analysis
- Nonstandard sample fast quantitative analysis
- Rolled plate (Al, Fe, Cu plate, etc) structure measurement and evaluate

NDT Service

RT, UT, MT, PT



For any facility today, uptime is critical. Comprehensive support from Aolong ensures high-performance operation and superior cost-efficiency. All our support plans add value to your operation by ensuring ongoing productivity.

They provide the peace of mind that comes with the assurance that highly trained specialists will respond quickly to your support needs. Thorough up-front training and fast response on repairs contribute to long-term productivity. Having a support plan in place reduces the chance of costly unexpected downtime and minimizes the impact when service is required. With a Aolong comprehensive support plan your facility gains:

- ☆ Priority response
- ☆ Maximized uptime
- ☆ Extended system life
- ☆ Simplified administration
- ☆ Lower total cost-of-ownership

All newly purchased Aolong systems include a one year limited warranty and unlimited phone support. The limited warranty covers all parts and labor, including travel and any shipping charges, for a period of 12 months from the date of delivery.

Respectful Customers list

